

Online Appendix

Mismatches in Health: A Global Analysis of Discrepancies Between Self-Reported and Tested Mobility and Cognition

Vanessa di Lego, Sonja Spitzer, Patrick Lazarevič

* This Online Appendix contains additional information regarding the article:
<https://www.comparativepopulationstudies.de/index.php/CPoS/article/view/656/410>.



Appendix I: Regression Tables Main Analysis

Tab. A1: Odds ratio for consistency between tested and reported mobility by country. Model controlling for survey year, gender and age

Variables	Odds Ratio, Consistency				
	OR	2.50%	97.50%	t val.	p
(Intercept)	0.000	0.000	2.38E+23	-0.240	0.810
<i>Age Ref. 65-70</i>					
70-75	0.720	0.670	0.760	-10.470	0.000
75-80	0.550	0.520	0.590	-17.410	0.000
80-85	0.450	0.420	0.490	-20.220	0.000
85+	0.310	0.280	0.340	-26.100	0.000
<i>Country Ref. USA</i>					
Austria	0.650	0.440	0.970	-2.110	0.040
Belgium	0.930	0.690	1.270	-0.440	0.660
China	0.880	0.800	0.970	-2.570	0.010
Czechia	0.760	0.510	1.130	-1.360	0.170
Denmark	1.280	0.910	1.800	1.440	0.150
England	1.300	1.170	1.440	5.070	0.000
France	0.800	0.580	1.090	-1.420	0.160
Germany	0.990	0.680	1.440	-0.060	0.950
Greece	0.390	0.290	0.540	-5.770	0.000
India	0.270	0.240	0.310	-21.640	0.000
Ireland	0.650	0.390	1.080	-1.670	0.090
Israel	0.630	0.450	0.890	-2.620	0.010
Italy	0.660	0.470	0.920	-2.460	0.010
Mexico	0.520	0.430	0.630	-6.660	0.000
Netherlands	1.240	0.870	1.760	1.200	0.230
Poland	0.520	0.350	0.760	-3.350	0.000
Spain	0.430	0.310	0.590	-5.280	0.000
Sweden	1.680	1.180	2.390	2.880	0.000
Switzerland	1.480	0.970	2.240	1.840	0.070
<i>Year</i>	1.000	0.970	1.040	0.320	0.750
<i>Gender Ref. Man</i>					
Woman	0.660	0.630	0.690	-17.420	0.000

Note: %Consistency is reached if survey participants are healthy according to both tested and reported measures, or unhealthy according to both of the measures. For mobility, this is agreement between reporting some difficulty in walking 100m and having an average walking speed that is 0.4 m/s or lower.

Source: Own calculations based on the Gateway to Global Aging data.

Tab. A1.1: Odds ratio for consistency between tested and reported mobility by country. Model controlling for survey year, gender and ages 65+ and 75+

Variables	For ages 65+			For ages 75+		
	OR	Odds Ratio, Consistency 2.50% 97.50% t val.	p	OR	Odds Ratio, Consistency 2.50% 97.50% t val.	p
(Intercept)	0.000	2.38E+23 -0.240	0.810	3.42E+28	6.62E-06 1.77E+62	0.097
Age Ref. 65-70				Ref. 75-80		
70-75	0.720	0.760 -10.470	0.000	0.496	0.320 0.770	0.002
75-80	0.550	0.590 -17.410	0.000	0.707	0.492 1.015	0.060
80-85	0.450	0.490 -20.220	0.000	0.755	0.662 1.152	0.000
85+	0.310	0.340 -26.100	0.000	0.597	0.389 0.915	0.018
Country Ref. USA				0.975	0.662 1.436	0.898
Austria	0.650	0.970 -2.110	0.040	1.240	1.088 1.415	0.001
Belgium	0.930	1.270 -0.440	0.660	0.598	0.413 0.866	0.006
China	0.880	0.970 -2.570	0.010	0.744	0.488 1.134	0.169
Czechia	0.760	1.130 -1.360	0.170	0.299	0.207 0.434	0.000
Denmark	1.280	1.800 1.440	0.150	0.339	0.291 0.394	0.000
England	1.300	1.440 5.070	0.000	0.507	0.296 0.868	0.013
France	0.800	1.420 -1.420	0.160	0.487	0.330 0.719	0.000
Germany	0.990	0.680 1.440	0.950	0.502	0.341 0.738	0.000
Greece	0.390	0.540 -5.770	0.000	0.445	0.334 0.593	0.000
India	0.270	0.310 -21.640	0.000	0.944	0.633 1.408	0.779
Ireland	0.650	0.390 -1.670	0.090	0.408	0.267 0.623	0.000
Israel	0.630	0.450 0.890	0.010	0.324	0.224 0.469	0.000
Italy	0.660	0.470 0.920	0.010	1.281	0.856 1.915	0.229
Mexico	0.520	0.430 0.630	0.000	1.122	0.711 1.773	0.621
Netherlands	1.240	0.870 1.760	0.230	0.969	0.932 1.007	0.107
Poland	0.520	0.350 0.760	0.000	0.717	0.671 0.766	0.000
Spain	0.430	0.310 0.590	0.000	0.766	0.671 0.766	0.000
Sweden	1.680	1.180 2.390	0.000	0.717	0.671 0.766	0.000
Switzerland	1.480	0.970 2.240	0.070	0.717	0.671 0.766	0.000
Year	1.000	0.970 1.040	0.750	0.717	0.671 0.766	0.000
Gender Ref. Man				0.717	0.671 0.766	0.000
Woman	0.660	0.630 -17.420	0.000	0.717	0.671 0.766	0.000

Note: %Consistency is reached if survey participants are healthy according to both tested and reported measures, or unhealthy according to both of the measures. For mobility, this is agreement between reporting some difficulty in walking 100m and having an average walking speed that is 0.4 m/s or lower.

Source: Own calculations based on the Gateway to Global Aging data.

Tab. A2: Odds ratio for consistency between tested and reported cognition by country. Model controlling for survey year, gender and age

Variables	Odds Ratio, Consistency				
	OR	2.50%	97.50%	t val.	p
(Intercept)	2.17E+11	280.140	1.69E+20	2.500	0.010
<i>Age Ref. 65-70</i>					
70-75	0.860	0.840	0.890	-8.840	0.000
75-80	0.810	0.780	0.840	-11.600	0.000
80-85	0.850	0.810	0.880	-7.890	0.000
85+	0.950	0.910	1.000	-1.890	0.060
<i>Country Ref. USA</i>					
Austria	1.440	1.330	1.550	9.030	0.000
Belgium	0.970	0.900	1.050	-0.740	0.460
China	0.720	0.680	0.770	-11.190	0.000
Czechia	0.950	0.890	1.020	-1.500	0.130
Denmark	1.480	1.340	1.620	7.960	0.000
England	0.900	0.840	0.960	-3.150	0.000
Estonia	0.490	0.470	0.530	-22.850	0.000
France	0.810	0.760	0.870	-5.790	0.000
Germany	1.240	1.140	1.350	4.990	0.000
Hungary	0.780	0.690	0.870	-4.250	0.000
Israel	1.080	0.960	1.220	1.250	0.210
Italy	0.860	0.800	0.930	-4.060	0.000
Luxembourg	1.320	1.110	1.580	3.090	0.000
Mexico	0.430	0.410	0.460	-31.280	0.000
Netherlands	1.410	1.290	1.540	7.430	0.000
Poland	0.790	0.690	0.920	-3.150	0.000
Portugal	0.720	0.630	0.830	-4.620	0.000
Slovenia	0.890	0.820	0.980	-2.470	0.010
Spain	0.860	0.800	0.910	-4.680	0.000
Sweden	0.910	0.840	0.980	-2.490	0.010
Switzerland	1.560	1.420	1.720	9.090	0.000
<i>Year</i>	0.990	0.980	1.000	-2.420	0.020
<i>Gender Ref. Man</i>					
Woman	1.010	0.980	1.030	0.540	0.590

Note: %Consistency is reached if survey participants are healthy according to both tested and reported measures, or unhealthy according to both of the measures. For cognition, this is agreement between reporting "poor" and "fair" memory and recalling three words or less in the immediate word recall test in the main analysis.

Source: Own calculations based on the Gateway to Global Aging data.

Appendix II: Robustness checks with alternative definitions of health and exclusion of Mexico

Tab. A3: Descriptive summary of %consistency between tested and reported mobility, by survey, country, gender and age comparing 0.4m/s (used in the manuscript) and 0.6m/s (sensitivity analysis)

Survey/Country	Walking Speed threshold 0.6m/s Age					Walking Speed threshold 0.4m/s Age										
	Total	F	M	65-70 in percent	70-75 in percent	75-80	80-85	85+	Total	F	M	65-70 in percent	70-75 in percent	75-80	80-85	85+
HRS																
USA	79.0	76.8	81.9	85.5	82.6	79.7	70.6	59.9	85.8	84.4	87.6	89.7	88.3	85.8	82.1	72.7
SHARE																
Europe	60.8	57.5	66.1	-	62.4	61.0	56.0	77.7	76.0	73.8	79.7	-	-	77.7	77.7	67.7
Austria	50.2	46.3	55.9	-	59.3	47.5	28.9	77.3	72.4	70.5	75.2	-	-	77.3	72.7	57.3
Belgium	66.8	61.6	75.2	-	73.5	62.6	55.5	84.4	80.1	77.2	84.7	-	-	84.4	77.4	72.5
Czechia	66.1	60.5	74.4	-	71.5	59.3	58.5	83.8	81.2	79.4	83.8	-	-	83.5	80.8	69.1
Denmark	72.2	70.8	74.4	-	76.7	70.0	66.3	87.0	84.2	82.4	87.0	-	-	88.2	81.6	80.1
France	62.3	60.3	65.8	-	61.7	64.7	58.3	78.3	76.2	74.0	80.1	-	-	78.3	76.9	69.5
Germany	62.6	55.6	75.6	-	65.8	59.8	58.5	83.6	80.0	78.0	83.6	-	-	80.9	83.0	68.8
Greece	45.4	43.0	48.1	-	47.2	49.6	34.4	67.5	64.2	60.4	68.6	-	-	67.5	66.2	53.1
Ireland	62.6	68.0	53.9	-	66.2	56.4	70.9	77.9	72.4	76.1	66.7	-	-	71.2	74.3	70.5
Israel	68.1	70.9	64.9	-	67.1	66.9	73.0	80.8	77.9	75.3	80.8	-	-	77.9	75.3	82.6
Italy	58.1	53.0	67.2	-	55.7	64.0	50.9	73.8	73.8	70.3	80.0	-	-	74.2	79.2	59.2
Netherlands	69.1	65.5	74.4	-	76.3	63.9	61.5	87.0	85.9	87.0	84.3	-	-	87.7	87.9	78.3
Poland	57.9	59.6	55.6	-	58.7	61.7	45.0	69.2	69.2	61.9	79.1	-	-	69.9	75.6	51.3
Spain	51.8	52.6	50.8	-	53.5	44.8	58.4	65.7	65.7	63.7	68.5	-	-	69.0	61.3	64.5
Sweden	72.7	69.3	77.7	-	79.3	75.2	57.3	89.6	87.6	86.3	89.6	-	-	90.3	90.0	79.5
Switzerland	71.0	67.0	78.5	-	75.2	71.7	62.9	83.2	86.2	83.2	91.9	-	-	89.0	87.4	79.6
ELSA																
England	84.3	82.2	86.7	91.4	88.1	83.4	72.9	65	88.5	87.6	89.5	92.8	90.2	87.2	82.3	78.7
CHARLS																
China	66.2	61.2	71.1	76.8	68.7	54.9	47.8	44.6	84.6	81.7	87.4	90.6	85.5	80.2	74.0	66.6
MHAS																
Mexico	54.3	44.6	64.5	54.9	56.9	49.0	53.1	55.0	80.7	78.2	83.2	86.6	82.9	77.1	69.7	69.6
LASI																
India	66.3	62.0	70.6	68.9	65.0	64.6	60.2	65.3	66.0	60.4	71.5	70.4	65.0	62.5	59.5	55.6

Note: %Consistency is reached if survey participants are healthy according to both tested and reported measures, or unhealthy according to both of the measures. For mobility, this is agreement between reporting some difficulty in walking 100m and having an average walking speed that is 0.4 m/s or lower and the sensitivity analysis is for 0.6m/s or lower.

Source: Own calculations based on the Gateway to Global Aging data.

Tab. A4: Odds ratio for consistency between tested and reported mobility, by survey, country, gender and age comparing 0.4m/s (used in the manuscript) and 0.6m/s (sensitivity analysis)

Variables	Walking Speed threshold 0.6m/s (sensitivity analysis)			Walking Speed threshold 0.4m/s (manuscript value)		
	OR	2.50% Odds Ratios, Consistency 97.50% t val.	p	OR	2.50% Odds Ratios, Consistency 97.50% t val.	p
(Intercept)	0.00	0.00	0.00	0.00	2.38E+23	0.81
<i>Age Ref. 65-70</i>						
70-75	0.75	0.71	0.00	0.72	0.76	0.00
75-80	0.58	0.54	0.00	0.55	0.59	0.00
80-85	0.43	0.40	0.00	0.45	0.49	0.00
85+	0.35	0.32	0.00	0.31	0.34	0.00
<i>Country Ref. USA</i>						
Austria	0.65	0.46	0.01	0.65	0.97	0.04
Belgium	1.30	1.00	0.05	0.93	1.27	0.66
China	0.51	0.47	0.00	0.88	0.97	0.01
Czechia	0.92	0.66	0.61	0.76	1.13	0.17
Denmark	1.76	1.33	0.00	1.28	1.80	0.15
England	1.64	1.50	0.00	1.30	1.44	0.00
France	1.11	0.85	0.44	0.80	1.09	0.16
Germany	1.14	0.83	0.41	0.99	1.44	0.95
Greece	0.49	0.37	0.00	0.39	0.54	0.00
India	0.39	0.35	0.00	0.27	0.24	0.00
Ireland	1.02	0.65	0.94	0.65	1.08	0.09
Israel	1.00	0.74	0.99	0.63	0.89	0.01
Italy	0.80	0.60	0.12	0.66	0.47	0.01
Mexico	0.32	0.27	0.00	0.52	0.43	0.00
Netherlands	1.42	1.07	0.02	1.24	0.87	0.23
Poland	0.73	0.52	0.08	0.52	0.35	0.00
Spain	0.66	0.50	0.00	0.43	0.31	0.00
Sweden	1.86	1.41	0.00	1.68	1.18	0.00
Switzerland	1.65	1.20	0.00	1.48	2.24	0.07
Year	1.07	1.04	0.00	1.00	1.04	0.75
<i>Gender Ref. Man</i>						
Woman	0.68	0.65	0.00	0.66	0.63	0.00

Note: %Consistency is reached if survey participants are healthy according to both tested and reported measures, or unhealthy according to both of the measures. For mobility, this is agreement between reporting some difficulty in walking 100m and having an average walking speed that is 0.4 m/s or lower and the sensitivity analysis is for 0.6m/s or lower.

Source: Own calculations based on the Gateway to Global Aging data.

Tab. A4.1: Odds ratio for consistency between tested and reported mobility, by survey, country, gender and age comparing 0.4m/s (used in the manuscript) and excluding Mexico (sensitivity analysis)

Variables	Walking Speed threshold 0.4m/s (sensitivity analysis excluding Mexico)				Walking Speed threshold 0.4m/s (manuscript value)				
	OR	2.50%	97.50%	p	OR	2.50%	97.50%	p	
(Intercept)	0.00	0.00	2.20E+23	-0.24	0.00	0.00	2.38E+23	-0.24	0.81
Age Ref. 65-70									
70-75	0.72	0.68	0.77	-10.17	0.72	0.67	0.76	-10.47	0.00
75-80	0.56	0.52	0.59	-17.14	0.55	0.52	0.59	-17.41	0.00
80-85	0.46	0.42	0.49	-19.73	0.45	0.42	0.49	-20.22	0.00
85+	0.31	0.29	0.34	-25.70	0.31	0.28	0.34	-26.10	0.00
Country Ref. USA									
Austria	0.65	0.44	0.97	-2.11	0.65	0.44	0.97	-2.11	0.04
Belgium	0.93	0.69	1.27	-0.44	0.93	0.69	1.27	-0.44	0.66
China	0.89	0.81	0.97	-2.54	0.88	0.80	0.97	-2.57	0.01
Czechia	0.76	0.51	1.13	-1.37	0.76	0.51	1.13	-1.36	0.17
Denmark	1.28	0.91	1.80	1.43	1.28	0.91	1.80	1.44	0.15
England	1.30	1.18	1.44	5.09	1.30	1.17	1.44	5.07	0.00
France	0.80	0.58	1.09	-1.43	0.80	0.58	1.09	-1.42	0.00
Germany	0.99	0.68	1.44	-0.06	0.99	0.68	1.44	-0.06	0.95
Greece	0.39	0.29	0.54	-5.77	0.39	0.29	0.54	-5.77	0.00
India	0.28	0.24	0.31	-21.61	0.27	0.24	0.31	-21.64	0.00
Ireland	0.65	0.39	1.08	-1.68	0.65	0.39	1.08	-1.67	0.09
Israel	0.63	0.45	0.89	-2.63	0.63	0.45	0.89	-2.62	0.01
Italy	0.66	0.47	0.92	-2.47	0.66	0.47	0.92	-2.46	0.01
Mexico					0.52	0.43	0.63	-6.66	0.00
Netherlands	1.24	0.87	1.76	1.20	1.24	0.87	1.76	1.20	0.23
Poland	0.52	0.35	0.76	-3.35	0.52	0.35	0.76	-3.35	0.00
Spain	0.43	0.31	0.59	-5.29	0.43	0.31	0.59	-5.28	0.00
Sweden	1.68	1.18	2.39	2.87	1.68	1.18	2.39	2.88	0.00
Switzerland	1.48	0.97	2.23	1.83	1.48	0.97	2.24	1.84	0.07
Year	1.01	0.98	1.04	0.32	1.00	0.97	1.04	0.32	0.75
Gender Ref. Man									
Woman	0.66	0.63	0.69	-17.37	0.66	0.63	0.69	-17.42	0.00

Note: %Consistency is reached if survey participants are healthy according to both tested and reported measures, or unhealthy according to both of the measures. For mobility, this is agreement between reporting some difficulty in walking 100m and having an average walking speed that is 0.4 m/s or lower and excluding Mexico for the sensitivity test.

Source: Own calculations based on the Gateway to Global Aging data.

Tab. A4.2: Odds ratio for consistency between tested and reported mobility, by survey, country, gender and age comparing 0.6m/s (sensitivity analysis) and excluding Mexico (sensitivity analysis)

Variables	Walking Speed threshold 0.6m/s (sensitivity analysis, excluding Mexico)				Walking Speed threshold 0.6m/s (sensitivity analysis)					
	OR	2.50%	Odds Ratios, Consistency 97.50%	t val.	p	OR	2.50%	Odds Ratios, Consistency 97.50%	t val.	p
(Intercept)	0.00	0.00	0.00	-4.98	0.00	0.00	0.00	0.00	-4.99	0.00
<i>Age Ref. 65-70</i>										
70-75	0.74	0.70	0.79	-4.98	0.00	0.75	0.71	0.79	-10.26	0.00
75-80	0.58	0.54	0.61	-10.18	0.00	0.58	0.54	0.61	-18.00	0.00
80-85	0.43	0.40	0.46	-17.94	0.00	0.43	0.40	0.46	-23.94	0.00
85+	0.35	0.32	0.38	-23.87	0.00	0.35	0.32	0.38	-24.97	0.00
<i>Country Ref. USA</i>										
Austria	0.65	0.46	0.91	-24.94	0.00	0.65	0.46	0.91	-2.52	0.01
Belgium	1.30	1.01	1.68	-2.51	0.01	1.30	1.00	1.68	1.99	0.05
China	0.51	0.47	0.55	-17.82	0.00	0.51	0.47	0.55	-17.81	0.00
Czechia	0.92	0.66	1.28	-0.50	0.62	0.92	0.66	1.28	-0.51	0.61
Denmark	1.77	1.33	2.33	3.99	0.00	1.76	1.33	2.33	3.97	0.00
England	1.64	1.50	1.78	11.26	0.00	1.64	1.50	1.78	11.27	0.00
France	1.11	0.85	1.45	0.79	0.43	1.11	0.85	1.45	0.78	0.44
Germany	1.14	0.83	1.58	0.82	0.41	1.14	0.83	1.57	0.82	0.41
Greece	0.49	0.37	0.65	-4.90	0.00	0.49	0.37	0.65	-4.91	0.00
India	0.39	0.35	0.43	-18.29	0.00	0.39	0.35	0.43	-18.27	0.00
Ireland	1.02	0.65	1.61	0.08	0.93	1.02	0.65	1.60	0.08	0.94
Israel	1.00	0.74	1.35	0.00	1.00	1.00	0.74	1.34	-0.01	0.99
Italy	0.80	0.61	1.06	-1.54	0.12	0.80	0.60	1.06	-1.55	0.12
<i>Mexico</i>						0.32	0.27	0.37	-13.93	0.00
Netherlands	1.42	1.07	1.90	2.41	0.02	1.42	1.07	1.89	2.40	0.02
Poland	0.74	0.52	1.04	-1.74	0.08	0.73	0.52	1.04	-1.75	0.08
Spain	0.66	0.50	0.87	-2.94	0.00	0.66	0.50	0.87	-2.96	0.00
Sweden	1.86	1.42	2.44	4.46	0.00	1.86	1.41	2.44	4.44	0.00
Switzerland	1.65	1.20	2.27	3.10	0.00	1.65	1.20	2.26	3.09	0.00
<i>Year</i>						1.07	1.04	1.09	5.06	0.00
<i>Gender Ref. Man</i>										
Woman	0.68	0.66	0.71	-17.89	0.00	0.68	0.65	0.71	-18.22	0.00

Note: %Consistency is reached if survey participants are healthy according to both tested and reported measures, or unhealthy according to both of the measures. For mobility, this is agreement between reporting some difficulty in walking 100m and having an average walking speed that is for 0.6m/s or lower and excluding Mexico as a sensitivity test.

Source: Own calculations based on the Gateway to Global Aging data.

Tab. A5: Descriptive summary of %consistency between tested and reported cognition, by survey, country, gender and age comparing 3 words or less (used in the manuscript) and 2 words or less (sensitivity analysis)

Survey/Country	Memory test threshold recall 2 words or less (sensitivity)					Memory test threshold recall 3 words or less (manuscript)							
	Total	Gender		Age		Total	Gender		Age				
		F	M	65-70	70-75	75-80	80-85	85+	65-70	70-75	75-80	80-85	85+
				in percent				in percent					
HRS													
USA	70.7	71.5	69.7	74.1	71.0	68.3	68.4	67.9	69.0	69.7	68.0	64.9	63.1
SHARE													
Europe	66.9	66.0	68.2	72.2	66.7	63.5	63.2	65.8	66.5	66.1	66.9	64.4	65.0
Austria	75.4	75.7	75.0	81.5	78.6	71.9	69.7	66.6	74.8	75.6	73.6	69.6	67.4
Belgium	69.5	68.7	70.7	76.5	71.3	64.8	66.5	63.0	67.4	66.0	69.2	63.1	60.1
Czechia	66.7	64.4	69.8	72.6	69.1	63.4	55.2	58.7	66.8	64.4	70.2	55.5	61.1
Denmark	77.6	77.2	78.1	84.7	78.9	74.1	68.8	67.5	75.6	75.7	75.6	66.8	66.5
Estonia	46.1	45.7	47.1	52.2	45.4	40.3	40.7	54.7	51.3	50.8	52.5	49.6	64.3
France	63.8	61.6	67.0	70.7	65.1	60.0	58.4	61.3	63.1	61.5	65.5	58.6	58.7
Germany	72.5	73.2	71.5	77.2	72.9	68.9	71.8	68.5	70.4	71.6	69.0	69.4	65.0
Hungary	58.7	55.7	63.7	62.0	53.8	52.8	66.0	61.9	58.9	55.5	64.5	59.8	70.6
Israel	68.0	68.7	67.2	73.2	65.9	65.4	63.1	67.4	71.4	73.8	68.6	68.7	76.4
Italy	63.4	61.4	66.0	69.1	61.3	60.3	60.8	64.2	64.0	63.9	64.2	64.9	71.0
Luxembourg	76.4	75.9	77.1	82.0	81.1	78.4	71.0	57.6	73.4	72.0	75.0	66.7	57.7
Netherlands	78.4	79.9	76.7	83.4	77.2	75.0	78.9	71.1	74.2	75.5	72.7	71.7	62.4
Poland	61.6	59.9	64.2	70.8	55.0	61.9	54.1	63.9	60.4	58.3	63.9	56.4	57.7
Portugal	63.8	60.3	68.7	62.5	65.7	59.8	63.4	75.4	65.7	63.5	68.7	68.7	72.3
Slovenia	68.0	68.1	67.7	75.2	66.9	67.0	61.2	62.1	66.1	66.7	65.2	60.2	58.6
Spain	59.5	59.1	60.0	60.5	55.6	57.5	57.0	71.0	62.9	63.0	62.7	66.2	70.6
Sweden	66.1	65.7	66.5	74.1	65.5	62.1	56.5	62.1	65.1	65.0	65.4	57.0	62.2
Switzerland	78.3	77.4	79.5	85.9	81.4	74.6	69.9	69.5	76.1	75.1	77.4	66.0	66.2
ELSA													
England	62.4	63.8	60.7	67.5	62.2	60.6	55.3	59.9	63.2	64.4	61.8	58.0	61.1
CHARLS													
China	45.2	48.7	41.7	35.5	41.8	49.3	65.8	82.1	59.8	63.4	56.2	75.2	86.7
MHAS													
Mexico	43.8	42.5	45.3	41.5	39.1	43.4	47.6	63.3	48.0	46.0	50.1	56.3	69.2

Note: %Consistency is reached if survey participants are healthy according to both tested and reported measures, or unhealthy according to both of the measures. For cognition, this is agreement between reporting “poor” and “fair” memory and recalling three words or less in the immediate word recall test in the main analysis and 2 words or less for the sensitivity. We do not differentiate between negative consistency, i.e. both measures suggest health limitations, and positive consistency, i.e. both measures suggest no health limitations

Source: Own calculations based on the Gateway to Global Aging data.

Tab. A6: Odds ratio for consistency between tested and reported cognition, by survey, country, gender and age comparing 3 words or less (used in the manuscript) and 2 words or less (sensitivity analysis)

Variables	Cognition threshold 2 words or less (sensitivity)				Cognition threshold 3 words or less (manuscript)				
	OR	2.50% Odds Ratios	97.50% Consistency t val.	p	OR	2.50% Odds Ratios	97.50% Consistency t val.	p	
(Intercept)	2E+21	5E+12	1E+30	4.82	2E+11	280.1	2E+20	2.50	0.01
<i>Age Ref. 65-70</i>									
70-75	0.85	0.82	0.88	-9.47	0.86	0.84	0.89	-8.84	0.00
75-80	0.78	0.76	0.81	-13.01	0.81	0.78	0.84	-11.60	0.00
80-85	0.81	0.77	0.84	-9.94	0.85	0.81	0.88	-7.89	0.00
85+	0.96	0.91	1.01	-1.55	0.95	0.91	1.00	-1.89	0.06
<i>Country Ref. USA</i>									
Austria	1.41	1.30	1.53	8.36	1.44	1.33	1.55	9.03	0.00
Belgium	0.99	0.91	1.06	-0.37	0.97	0.90	1.05	-0.74	0.46
China	0.36	0.34	0.39	-34.68	0.72	0.68	0.77	-11.19	0.00
Czechia	0.88	0.83	0.95	-3.56	0.95	0.89	1.02	-1.50	0.13
Denmark	1.56	1.41	1.73	8.58	1.48	1.34	1.62	7.96	0.00
England	0.85	0.79	0.91	-4.62	0.90	0.84	0.96	-3.15	0.00
Estonia	0.38	0.35	0.40	-31.04	0.49	0.47	0.53	-22.85	0.00
France	0.77	0.72	0.83	-7.03	0.81	0.76	0.87	-5.79	0.00
Germany	1.26	1.15	1.38	5.14	1.24	1.14	1.35	4.99	0.00
Hungary	0.65	0.58	0.73	-7.32	0.78	0.69	0.87	-4.25	0.00
Israel	0.88	0.78	0.99	-2.16	1.08	0.96	1.22	1.25	0.21
Italy	0.81	0.75	0.87	-5.67	0.86	0.80	0.93	-4.06	0.00
Luxembourg	1.49	1.24	1.79	4.22	1.32	1.11	1.58	3.09	0.00
Mexico	0.35	0.33	0.37	-38.09	0.43	0.41	0.46	-31.28	0.00
Netherlands	1.60	1.45	1.77	9.42	1.41	1.29	1.54	7.43	0.00
Poland	0.72	0.63	0.84	-4.41	0.79	0.69	0.92	-3.15	0.00
Portugal	0.54	0.47	0.62	-8.65	0.72	0.63	0.83	-4.62	0.00
Slovenia	0.90	0.83	0.99	-2.14	0.89	0.82	0.98	-2.47	0.01
Spain	0.70	0.65	0.74	-10.78	0.86	0.80	0.91	-4.68	0.00
Sweden	0.88	0.81	0.95	-3.33	0.91	0.84	0.98	-2.49	0.01
Switzerland	1.65	1.49	1.82	9.67	1.56	1.42	1.72	9.09	0.00
Year	0.98	0.97	0.99	-4.72	0.99	0.98	1.00	-2.42	0.02
<i>Gender Ref. Man</i>									
Woman	1.01	0.98	1.03	0.39	1.01	0.98	1.03	0.54	0.59

Note: %Consistency is reached if survey participants are healthy according to both tested and reported measures, or unhealthy according to both of the measures. For cognition, this is agreement between reporting "poor" and "fair" memory and recalling three words or less in the immediate word recall test in the main analysis and 2 words or less for the sensitivity.

Source: Own calculations based on the Gateway to Global Aging data.

Tab. A6.1: Odds ratio for consistency between tested and reported cognition, by survey, country, gender and age comparing 3 words or less (used in the manuscript) and excluding Mexico (sensitivity analysis)

Variables	Cognition threshold 3 words or less (sensitivity analysis, excluding Mexico)				Cognition threshold 3 words or less (manuscript)				
	OR	Odds Ratio, 2.50%	Consistency 97.50% t val.	p	OR	Odds Ratio, 2.50%	Consistency 97.50% t val.	p	
(Intercept)	611.81	0.00	1.92E+12	0.58	2E+11	280.1	2E+20	2.50	0.01
<i>Age Ref. 65-70</i>									
70-75	0.85	0.82	0.88	-9.18	0.86	0.84	0.89	-8.84	0.00
75-80	0.76	0.74	0.80	-13.38	0.81	0.78	0.84	-11.60	0.00
80-85	0.76	0.73	0.80	-11.79	0.85	0.81	0.88	-7.89	0.00
85+	0.82	0.78	0.86	-7.50	0.95	0.91	1.00	-1.89	0.06
<i>Country Ref. USA</i>									
Austria	1.42	1.31	1.53	8.72	1.44	1.33	1.55	9.03	0.00
Belgium	0.97	0.90	1.04	-0.89	0.97	0.90	1.05	-0.74	0.46
China	0.70	0.66	0.74	-12.32	0.72	0.68	0.77	-11.19	0.00
Czechia	0.93	0.87	1.00	-2.06	0.95	0.89	1.02	-1.50	0.13
Denmark	1.46	1.32	1.60	7.71	1.48	1.34	1.62	7.96	0.00
England	0.85	0.80	0.92	-4.40	0.90	0.84	0.96	-3.15	0.00
Estonia	0.49	0.46	0.52	-23.19	0.49	0.47	0.53	-22.85	0.00
France	0.81	0.76	0.87	-5.88	0.81	0.76	0.87	-5.79	0.00
Germany	1.22	1.12	1.33	4.64	1.24	1.14	1.35	4.99	0.00
Hungary	0.77	0.68	0.87	-4.36	0.78	0.69	0.87	-4.25	0.00
Israel	1.06	0.95	1.20	1.03	1.08	0.96	1.22	1.25	0.21
Italy	0.85	0.79	0.91	-4.43	0.86	0.80	0.93	-4.06	0.00
Luxembourg	1.30	1.09	1.55	2.89	1.32	1.11	1.58	3.09	0.00
<i>Mexico</i>									
Netherlands	1.39	1.27	1.52	7.12	0.43	0.41	0.46	-31.28	0.00
Poland	0.79	0.69	0.92	-3.15	1.41	1.29	1.54	7.43	0.00
Portugal	0.72	0.62	0.82	-4.70	0.79	0.69	0.92	-3.15	0.00
Slovenia	0.88	0.81	0.97	-2.70	0.72	0.63	0.83	-4.62	0.00
Spain	0.85	0.80	0.91	-4.77	0.89	0.82	0.98	-2.47	0.01
Sweden	0.90	0.83	0.97	-2.88	0.86	0.80	0.91	-4.68	0.00
Switzerland	1.55	1.40	1.70	8.90	0.91	0.84	0.98	-2.49	0.01
					1.56	1.42	1.72	9.09	0.00

Tab. A6.1: Conitnuation

Variables	Cognition threshold 3 words or less (sensitivity analysis, excluding Mexico)			Cognition threshold 3 words or less (manuscript)		
	OR	Odds Ratios, Consistency 97.5% 2.50%	t val. p	OR	Odds Ratios, Consistency 97.50% 2.50%	t val. p
<i>Year</i>	1.00	0.99	1.01	-0.49	0.62	
<i>Gender Ref. Man</i>						
<i>Woman</i>	1.05	1.02	1.08	3.19	0.00	
				1.00	-2.42	0.02
				1.03	0.54	0.59

Note: %Consistency is reached if survey participants are healthy according to both tested and reported measures, or unhealthy according to both of the measures. For cognition, this is agreement between reporting "poor" and "fair" memory and recalling three words or less in the immediate word recall test in the main analysis and excluding Mexico for the sensitivity.

Source: Own calculations based on the Gateway to Global Aging data.

Tab. A6.2: Odds ratio for consistency between tested and reported cognition, by survey, country, gender and age comparing 2 words or less (sensitivity analysis) and excluding Mexico (sensitivity analysis)

Variables	Cognition threshold 2 words or less (sensitivity analysis, excluding Mexico)				Cognition threshold 2 words or less (sensitivity)					
	OR	2.50%	Odds Ratios, Consistency 97.5%	t val.	p	OR	2.50%	Odds Ratios, Consistency 97.50%	t val.	p
(Intercept)	4.4E+12	2.3E+03	8.7E+21	2.67	0.01	2E+21	5E+12	1E+30	4.82	0.00
<i>Age Ref. 65-70</i>										
70-75	0.84	0.81	0.87	-9.20	0.00	0.85	0.82	0.88	-9.47	0.00
75-80	0.76	0.73	0.79	-13.79	0.00	0.78	0.76	0.81	-13.01	0.00
80-85	0.75	0.72	0.78	-12.37	0.00	0.81	0.77	0.84	-9.94	0.00
85+	0.85	0.81	0.90	-6.00	0.00	0.96	0.91	1.01	-1.55	0.12
<i>Country Ref. USA</i>										
Austria	1.40	1.29	1.51	8.13	0.00	1.41	1.30	1.53	8.36	0.00
Belgium	0.98	0.91	1.06	-0.48	0.63	0.99	0.91	1.06	-0.37	0.71
China	0.35	0.33	0.37	-35.35	0.00	0.36	0.34	0.39	-34.68	0.00
Czechia	0.87	0.81	0.93	-3.99	0.00	0.88	0.83	0.95	-3.56	0.00
Denmark	1.54	1.39	1.71	8.39	0.00	1.56	1.41	1.73	8.58	0.00
England	0.81	0.76	0.87	-5.80	0.00	0.85	0.79	0.91	-4.62	0.00
Estonia	0.37	0.35	0.40	-31.31	0.00	0.38	0.35	0.40	-31.04	0.00
France	0.77	0.72	0.83	-7.09	0.00	0.77	0.72	0.83	-7.03	0.00
Germany	1.24	1.14	1.36	4.84	0.00	1.26	1.15	1.38	5.14	0.00
Hungary	0.64	0.57	0.72	-7.37	0.00	0.65	0.58	0.73	-7.32	0.00
Israel	0.87	0.77	0.98	-2.37	0.02	0.88	0.78	0.99	-2.16	0.03
Italy	0.80	0.74	0.86	-5.97	0.00	0.81	0.75	0.87	-5.67	0.00
Luxembourg	1.46	1.22	1.76	4.04	0.00	1.49	1.24	1.79	4.22	0.00
<i>Mexico</i>										
Netherlands	1.59	1.44	1.75	9.18	0.00	0.35	0.33	0.37	-38.09	0.00
Poland	0.73	0.63	0.84	-4.38	0.00	1.60	1.45	1.77	9.42	0.00
Portugal	0.54	0.47	0.62	-8.66	0.00	0.72	0.63	0.84	-4.41	0.00
Slovenia	0.90	0.82	0.98	-2.32	0.02	0.54	0.47	0.62	-8.65	0.00
Spain	0.69	0.65	0.74	-10.86	0.00	0.90	0.83	0.99	-2.14	0.03
Sweden	0.87	0.80	0.94	-3.64	0.00	0.70	0.65	0.74	-10.78	0.00
Switzerland	1.63	1.48	1.81	9.52	0.00	0.88	0.81	0.95	-3.33	0.00
						1.65	1.49	1.82	9.67	0.00

Tab. A6.2: Continuation

Variables	Cognition threshold 2 words or less (sensitivity analysis, excluding Mexico)			Cognition threshold 2 words or less (sensitivity)				
	OR	Odds Ratios, Consistency 2.50% 97.5% t val.	p	OR	Odds Ratios, Consistency 2.50% 97.50% t val.	p		
<i>Year</i>	0.99	0.98	1.00	0.98	0.97	0.99	-4.72	0.00
<i>Gender Ref. Man</i>								
<i>Woman</i>	1.03	1.01	1.06	1.01	0.98	1.03	0.39	0.69

Note: %Consistency is reached if survey participants are healthy according to both tested and reported measures, or unhealthy according to both of the measures. For cognition, this is agreement between reporting "poor" and "fair" memory and recalling 2 words or less in the immediate word recall test and excluding Mexico for the sensitivity.

Source: Own calculations based on the Gateway to Global Aging data.

Fig. A1: %Prevalence (Panel A) and %consistency (Panel B) between reported and tested mobility, by age, gender and country

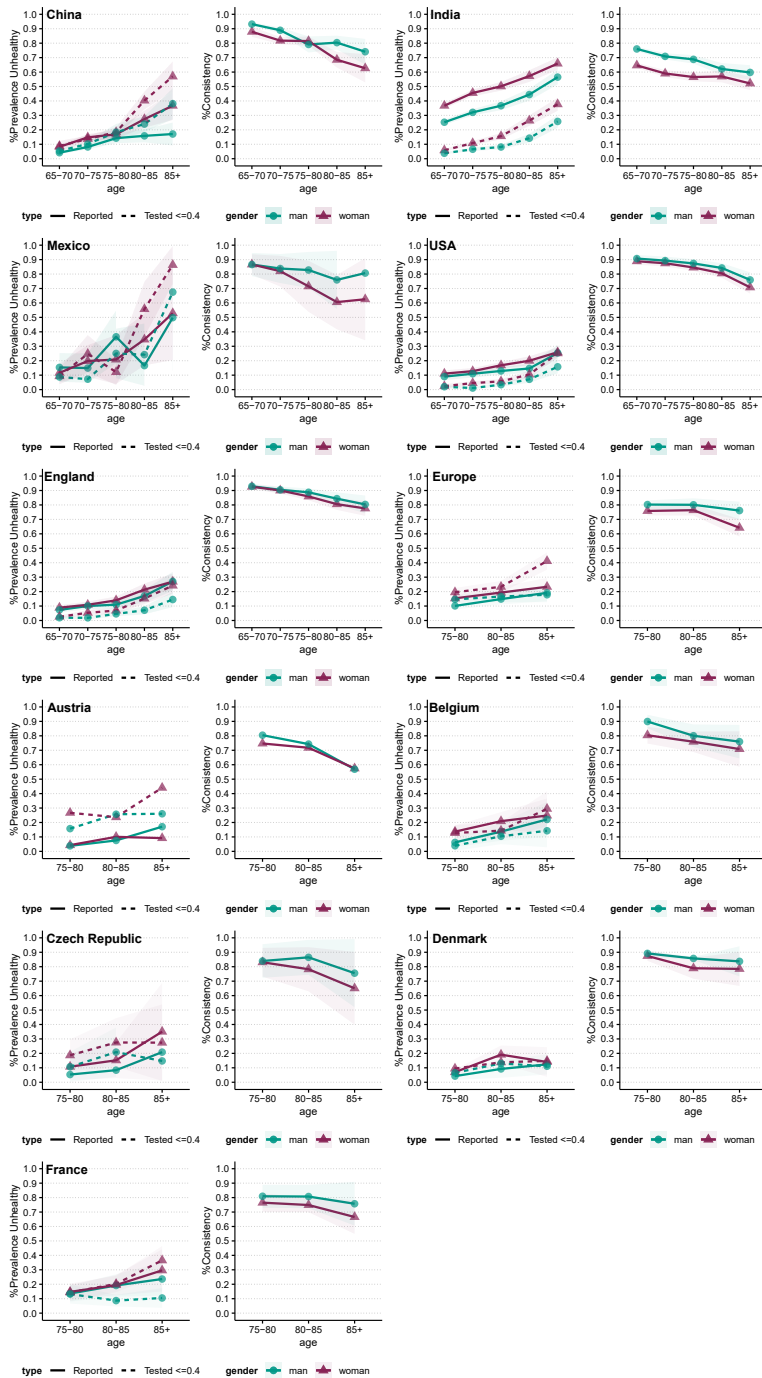
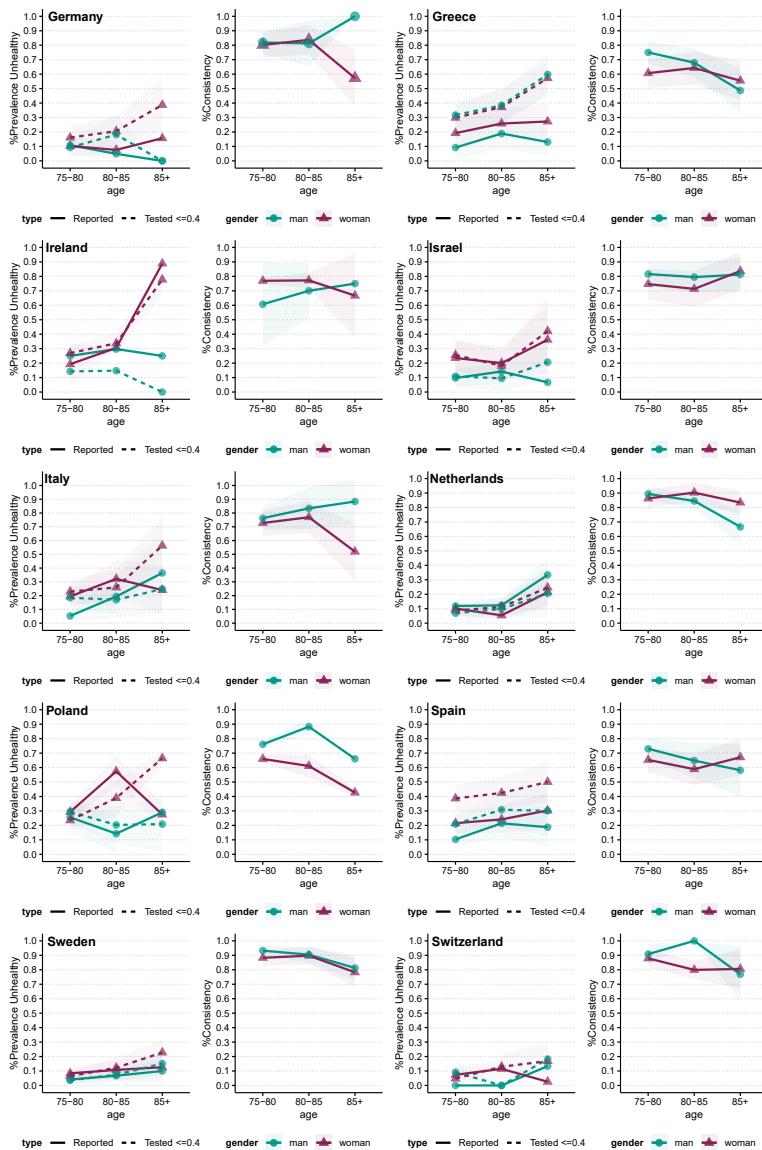


Fig. A1: Continuation



Note: %Prevalence unhealthy for self-reported mobility is reporting some difficulty walking 100m; for tested mobility is having a walking speed that is 0.4m/s or lower. All values consider complex survey design and are weighed accordingly. %Consistency is reached if survey participants are healthy according to both tested and reported measures, or unhealthy according to both of the measures.

Source: Own calculations based on the Gateway to Global Aging data.

Fig. A2: %Prevalence (Panel A) and %consistency (Panel B) between reported and tested cognition, by age, gender and country

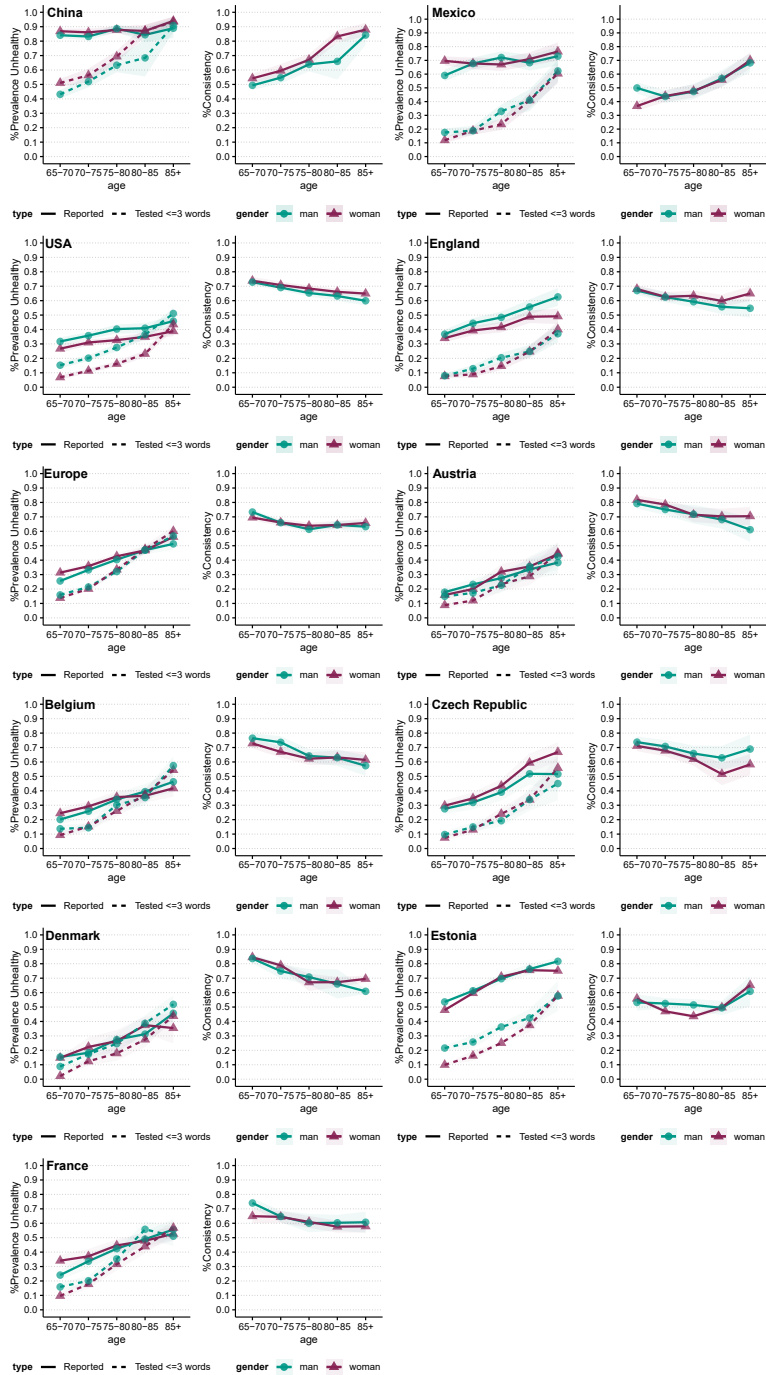
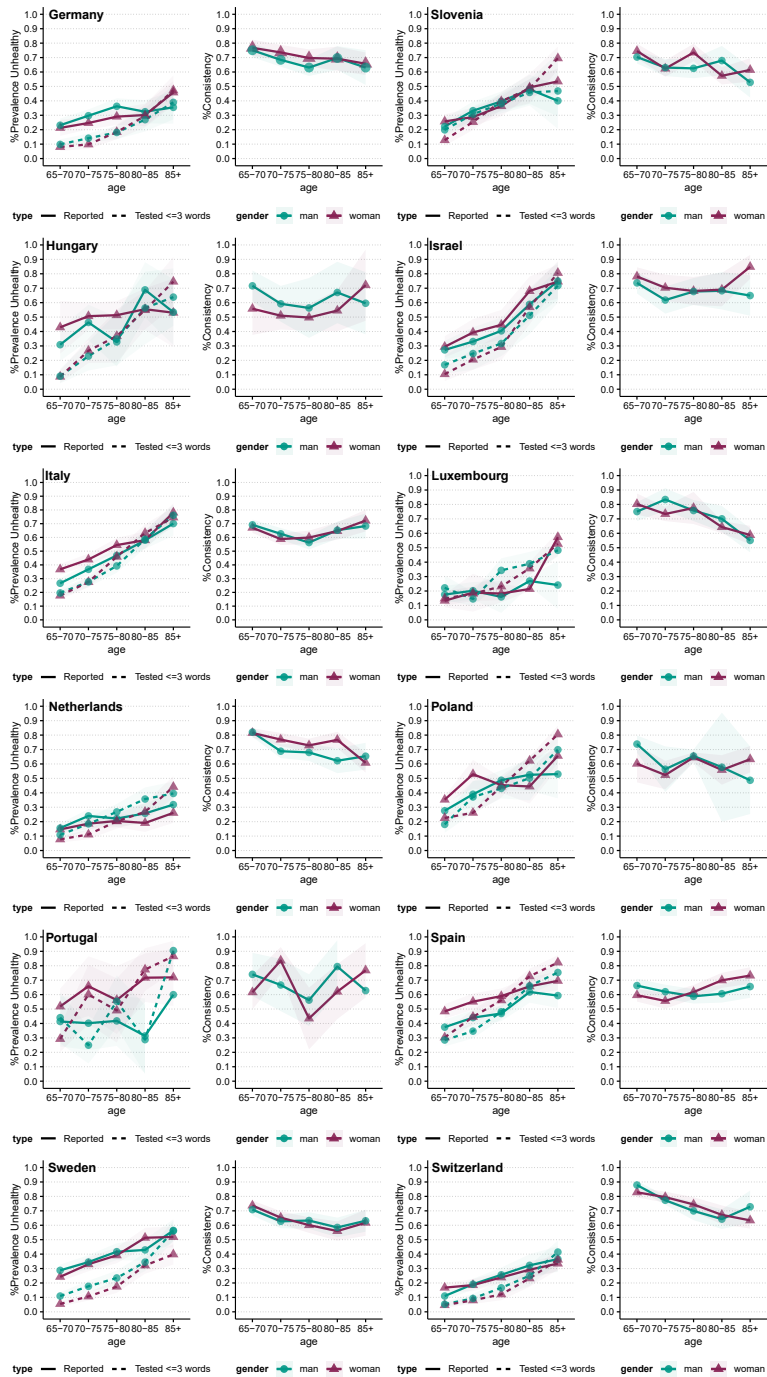


Fig. A2: Continuation



Note: %Prevalence unhealthy for self-reported cognition is reporting “poor” and “fair” memory; for tested cognition is recalling 3 words or less in the immediate word recall test. All values consider complex survey design and are weighed accordingly. %Consistency is reached if survey participants are healthy according to both tested and reported measures, or unhealthy according to both of the measures.

Source: Own calculations based on the Gateway to Global Aging data.

Date of submission: 08.09.2023

Date of acceptance: 26.06.2024

Dr. Vanessa di Lego (✉). Department of Demography, Faculty of Economics, Universidade Federal de Minas Gerais. Belo Horizonte, Brazil. E-mail: vdilego@cedeplar.ufmg.br
URL: <https://vdilego.github.io>

Dr. Sonja Spitzer. Department of Demography, University of Vienna, Wittgenstein Centre (IIASA, OeAW, University of Vienna). Vienna, Austria. E-mail: sonja.spitzer@univie.ac.at
URL: <https://ufind.univie.ac.at/en/person.html?id=112190>

Dr. Patrick Lazarevič. Statistik Austria. E-mail: Patrick.Lazarevic@statistik.gv.at
URL: <https://www.researchgate.net/profile/Patrick-Lazarevic>

Comparative Population Studies

www.comparativepopulationstudies.de

ISSN: 1869-8980 (Print) – 1869-8999 (Internet)

Published by

Federal Institute for Population Research
(BiB)
65180 Wiesbaden / Germany

Managing Publisher

Dr. Nikola Sander



2024

Editor

Prof. Dr. Roland Rau
Prof. Dr. Heike Trappe

Managing Editor

Dr. Katrin Schiefer

Editorial Assistant

Beatriz Feiler-Fuchs
Wiebke Hamann

Layout

Beatriz Feiler-Fuchs

E-mail: cpos@bib.bund.de

Scientific Advisory Board

Kieron Barclay (Stockholm)
Karsten Hank (Cologne)
Ridhi Kashyap (Oxford)
Natalie Nitsche (Canberra)
Alyson van Raalte (Rostock)
Pia S. Schober (Tübingen)
Rainer Wehrhahn (Kiel)

Board of Reviewers

Bruno Arpino (Barcelona)
Laura Bernardi (Lausanne)
Gabriele Doblhammer (Rostock)
Anette Eva Fasang (Berlin)
Michael Feldhaus (Oldenburg)
Alexia Fürnkranz-Prskawetz (Vienna)
Birgit Glorius (Chemnitz)
Fanny Janssen (Groningen)
Frank Kalter (Mannheim)
Stefanie Kley (Hamburg)
Bernhard Köppen (Koblenz)
Anne-Kristin Kuhnt (Rostock)
Hill Kulu (St Andrews)
Nadja Milewski (Wiesbaden)
Thorsten Schneider (Leipzig)
Tomas Sobotka (Vienna)
Jeroen J. A. Spijker (Barcelona)
Helga de Valk (The Hague)
Sergi Vidal (Barcelona)
Michael Wagner (Cologne)